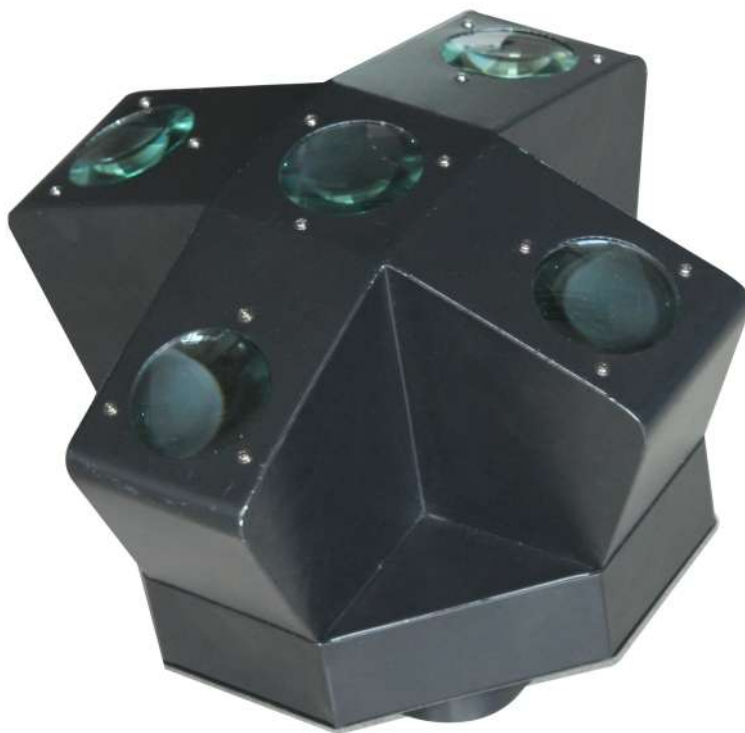


INVOLIGHT

DMX LED Motor Racket III



LEDRX500HP

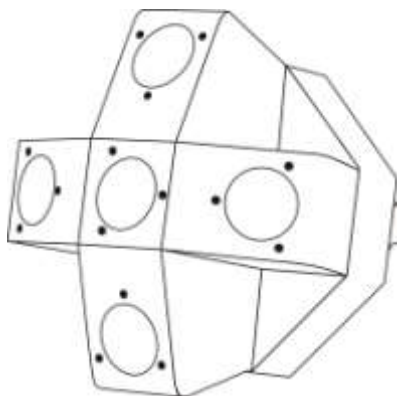
USER MANUAL

DMX LED Motor Rocket III Manual

Our DMX LED Motor Rocket light offers many possibilities to achieve very nice laser effects which you want. It is specially designed for the stages, disco, night clubs etc. Please read the manual before operation.

A. SPECIFICATION

1. Power input: AC 110V/240V, 60Hz/50Hz
2. Power consumption: 60W
3. LEDs: 20*3W RGBW(R: 5pcs, G: 5pcs, B: 5pcs, W: 5pcs)
4. Control feature: Built-in programs, auto running, DMX mode, M/S, sound-active mode
5. DMX channels: 3CH
6. Size: 345*345*262mm
7. Weight: 5.2kg



B. OPERATION

This series of product has rich effect programs, easier operation, there are five working modes:

- Built-in program
- Auto running
- DMX mode
- M/S mode
- Sound active

1. Built-in Program

- 1) Press “MODE” button, enter built-in program menu “Pr××”
- 2) Press “UP” or “DOWN” button ,select the effect programs **Pr01~Pr16**
- 3) Press “SETUP” button, setup speed program menu “SP××”
- 4) Press “UP” or “DOWN” button ,setup speed value **SP01~SPFL**(SP100).
- 5) Press “SETUP” button, setup flash program menu “FS××”
- 6) Press “UP” or “DOWN” button ,setup flash value **F500~F599**.

2. Auto Running

- 1) Press “MODE” button, enter auto run mode menu “**AUTO**”
- 2) Press “SETUP” button, setup auto run time’s menu “n×××”
- 3) Press “UP” or “DOWN” button ,setup auto run times value **001~100**.
- 4) Press “SETUP” button, enter auto run speed menu “SP××”
- 5) Press “UP” or “DOWN” button ,setup speed value **SP01~SPFL**(SP100).
- 6) Press “SETUP” button, enter auto run flash menu “FS××”
- 7) Press “UP” or “DOWN” button ,setup flash value **F500~F599**.

3. DMX Mode

- 1) Press “MODE” button, enter DMX mode menu “d×××”
- 2) Press “UP” or “DOWN” button, setup DMX address value **001~2512**.
- 3) Press “SETUP” button, setup DMX mode **3-2h**

CH1			CH2	CH3
NO.	DMX value	LEDs Programs	LEDs running speed	LEDs flash frequency
1	0	OFF	NO USE	NO USE
2	1—10	PROGRAM01	SPEED 0—255	FLASH 0—255
3	11—21	PROGRAM02		
4	22—32	PROGRAM03		
5	33—43	PROGRAM04		
6	44—54	PROGRAM05		
7	55—65	PROGRAM06		
8	66—76	PROGRAM07		
9	77—87	PROGRAM08		
10	88—98	PROGRAM09		
11	99—109	PROGRAM10		
12	110—120	PROGRAM11		
13	121—131	PROGRAM12		
14	132—142	PROGRAM13		
15	143—153	PROGRAM14		
16	154—164	PROGRAM15		
17	165—175	PROGRAM16		
18	176--255	Sound Mode		

4. M/S Mode

Press “MODE” button, enter the slave mode “SLAV”

5. Sound Active

- 1) Press “MODE” button, enter sound active mode “SoUn”

- 2) Press “SETUP” mode, enter sound active sensitivity menu “So××”
- 3) Press “UP” or “DOWN” button, setup the value of sound active sensitivity **5000 ~ 5031**.

C. On/off LED Display

1. Press “MODE” button, enter on/off LED display mode “Led”
2. Press “SETUP” button; enter LED display on or off.
3. Press “UP” “DOWN” to setup LED display on or off

Note: When you chose on, LED display always light up. When you chose off, LED display will turn off 20 seconds later.

D. Convert LED Display

1. Press “MODE” button, enter convert LED display mode “dISP”.
2. Press “SETUP” button, enter convert LED display (standard display “dISP”, covert display “dSIP”.)

E. Version No.

1. Press “MODE” button, enter the version of the software “Ver”.
2. Press “SETUP” button, to show the version No. “V10”.