



Install Sound



IL 115 Sub

This compact, direct-loaded subwoofer delivers natural-sounding bottom-end at impressively low distortion levels. It is a splendid option for lending low-end support to HK Audio® IL 8.1, IL 82, IL 8.75, IL 12.1 and IL 12.2 cabinets.

Hi-cut filter on board.

The IL 115 Sub is a compact subwoofer designed to extend IL 8.1, IL 82, IL 12.2 and IL 15.2 cabinets' low-frequency response. The enclosure is loaded with a direct-radiating 15" conical woofer in a bass reflex housing, driven by a built-in passive crossover.

Its hallmarks include powerful low-end, natural-

sounding response with low distortion levels, and compact dimensions. Depending on sound pressure requirements, it is ideally suited for sound reinforcement applications demanding enhanced low-end response.

The IL 115 Sub may be operated without a controller. However, for the greatest operating safety, best

performance and most convenient handling, we recommend using the HK AUDIO® Digital Field Controller (DFC).

Architectural specifications

The professional subwoofer system shall incorporate a 15" speaker yielding low distortion and natural bass reproduction. The bass loudspeaker shall be mounted in an optimally matching rectangular bass-reflex housing constructed of 16 mm-thick MDF and coated with either black or white acrylic paint. The speaker shall be protected by an impact-resistant perforated metal grille with acoustic foam glued to its back. The system shall include an internal passive crossover with a crossover frequency of 150 Hz, at a slope of 12 dB per octave, to enable parallel operation with full-range loudspeakers without requiring an additional controller.

Frequency response shall extend from 52 Hz to 130 Hz (+/- 3 dB).

Axial sensitivity shall measure 102 dB @ 1W/1m under half-space conditions. The maximum sound pressure level shall be 129 dB at 10% THD under half-space conditions. The subwoofer shall have a power-handling capacity of 600 watts RMS and an impedance of 8 ohms.

There shall be two types of input connectors: one Neutrik NL 4 Speakon® connector, and one pair of binding posts.

The exterior dimensions shall be 54 cm wide x 45.5 cm tall x 63 cm deep, and the unit shall weigh 29 kg (63.8 lbs).

The subwoofer shall be the HK AUDIO model **IL 115 Sub**.

- black: G 182103
- white: G 182113

Enclosure design and mechanical appointments

The IL 115's housing is made of 19-mm MDF coated with acrylic enamel. Cabinets ship in the standard colors black or white. The enclosure is shaped in a rectangular block. Covering its front baffle is an impact-resistant steel grille backed with laminated acoustic foam rubber. Four rubber stops on the bottom panel hold the cabinet securely in place.

The IL 115 Sub weighs 29 kg. It is 54 cm wide, 45.5 cm high and 62.5 cm deep.

Connectors are located on a countersunk panel on the back of the IL 115 Sub.

This panel offers a four-pin Speakon® port.

The IL 115 Sub's pin assignments are pin 1+ / pin 1-.

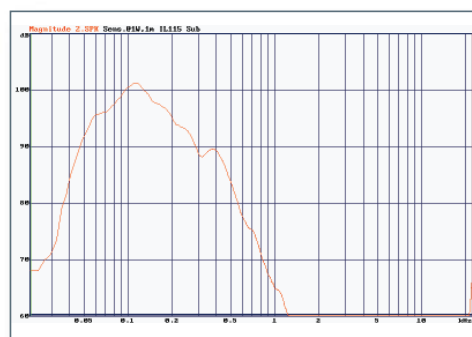
The IL 115 Sub is also equipped with a pair of binding posts enabling direct connection of speaker cords lacking plugs. The red binding post is wired in parallel to the Speakon® connector's 1+ pin; the black binding post to the 1- pin.

Electrical and acoustical data

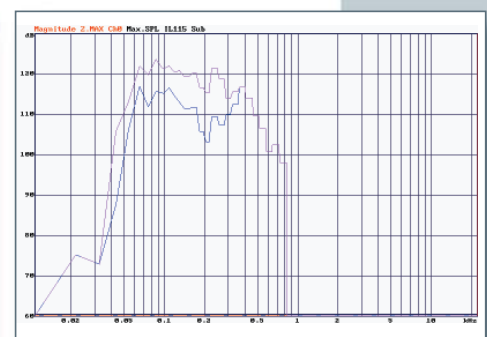
The IL 115 Sub features a 15" Precision Devices conical chassis speaker. It is driven by an internal passive crossover with a corner frequency of 150 Hz and a slope of 12 dB per octave. This yields a frequency response ranging from 48 Hz to 230 Hz. With this range, the IL 115 Sub is well-suited for deployment as an additional subwoofer to complement IL 8.1, IL 8.2, IL 12.2 and IL 15.2 fullrange cabinets.

The IL 115 Sub's nominal power handling capacity is 600 watts RMS at 8 ohms impedance. It delivers 102 dB (1W/1m) SPL, measured under half-space conditions. Maximum SPL measured under the same conditions at a distance of one meter is 129 dB at 10% THD.

Measurement charts



Frequency Response



Max. SPL

Complementary fullrange enclosures suitable for use as mid/ high cabinets

The following HK AUDIO® Installation Line fullrange enclosures are well-suited for supplementing the IL 115 Sub subwoofer:

IL 82

A compact cabinet for voice and fullrange applications, the IL 82 delivers exceptional speech intelligibility for background and near-field

sound reinforcement, for example, in foyers, lecture halls, bars and clubs. The IL 82 may be deployed as a fullrange or mid-/high-

range cabinet in configurations with a subwoofer such as the compact HK Audio® IL 112 Sub or IL 115 Sub. Passive crossover on board.



IL 8.1

A remarkably compact cabinet for voice and fullrange applications, the IL 8.1 delivers extraordinary phase linearity, highest speech intelligibility, and

considerable dynamic range. The IL 8.1 may be deployed as a fullrange or mid-/high-range cabinet in configurations with a subwoofer such as the compact HK Audio®

IL 112 Sub or IL 115 Sub. It is perfect for decentralized public address, presentations, near-field sound reinforcement, and so forth. Passive crossover on board.



IL 8.75

This horn-loaded, two-way, ceiling-mount enclosure is a fullrange, high-directivity cabinet tuned for remarkably natural-sounding voice

reinforcement. The IL 8.75 is ideal for public address in lecture halls and conference venues, and at fairs, airports and the like.

Passive crossover on board.

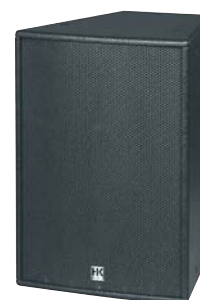


IL 12.1

A two-way, fullrange cabinet geared for high-quality voice and music reinforcement in theaters, pubs, sports arenas and multipurpose halls, clubs, etc., the IL 12.1 may be deployed as a fullrange

or mid-/high-range cabinet in combination with the HK Audio® subwoofers IL 115 Sub, IL 118 Sub or IL 218 Sub. It is the first-choice enclosure for assertive, clear speech

and music reinforcement for short- to medium-throw applications. Passive crossover on board.

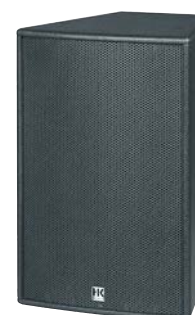


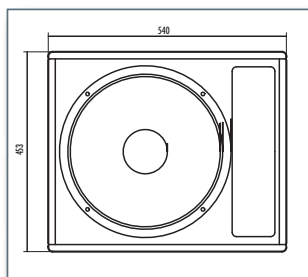
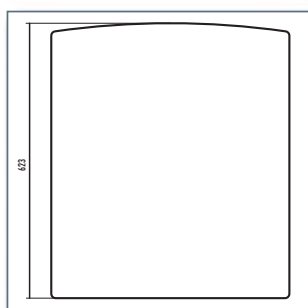
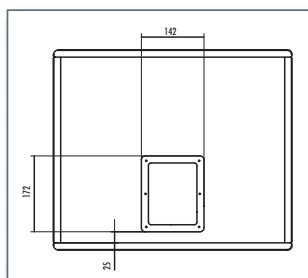
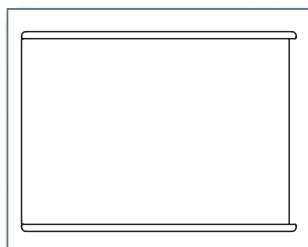
IL 12.2

Tuned for voice and music applications, this fullrange cabinet offers extraordinary phase linearity, highest speech intelligibility, and considerable dynamic range.

The IL 12.2 may be deployed as a fullrange or mid-/high-range cabinet in configurations with a subwoofer such as the IL 115 Sub. It is the consummate cab for voice

and music applications demanding high sound pressures levels. Passive crossover on board.





Technical specifications

Loudspeakers

Power handling nominal (RMS):	600 W
Power handling (program):	1200 W
Power handling (peak, 10 ms)	2400 W
Impedance:	8 ohms
Frequency response (± 3 dB):	52 Hz to 130 Hz
Frequency response (-10 dB):	48 Hz to 230 Hz
Axial sensitivity (1W/1m, half-space):	102 dB
Maximum SPL (3 % THD, half-space):	125 dB
Maximum SPL (10% THD, half-space):	129 dB
Maximum SPL (calculated at peak):	136 dB
Woofer:	15" Precision Devices
Corner frequency, passive crossover:	150 Hz / 12 dB per octave

Connectors

Ports:	1 Speakon® NL4, 1 set of binding posts
Pin assignments:	Speakon: 2+ / 2-

Housing

Housing design:	Bass reflex
Material:	16 mm MDF
Coating:	black or white acrylic enamel
Front cover:	impact-resistant protective steel grille
Weight:	29 kg / 63.9 lbs.
Dimensions (W x H x D):	54 x 45.5 x 62.5 cm 21 2/8" x 18 7/8" x 24 5/8"

Service items

- 15" speaker



HK AUDIO® • Postfach 1509 • 66595 St. Wendel • Germany • International Inquiries: fax +49-68 51-905 215
international@hkaudio.com • www.hkaudio.com



www.hkaudio.com

http://acctech.ru/cat/passivnye_kolonki/