

AE1ACTIVE

OWNERS MANUAL

AE1ACTIVE



(((AE)))

ACOUSTIC ENERGY

INTRODUCTION

Thank you for purchasing the Acoustic Energy AE1 Active loudspeaker. 'AE1' is more than a model number for Acoustic Energy. Our first ever speaker wore the AE1 name and ever since then, we have had a speaker in the range that is so called. The AE1 Active is the latest speaker to wear the badge and takes the name in a different direction to its predecessors while still embodying the traits and qualities that have made them so highly regarded.

This manual is intended to be a source of information about the speakers themselves and the materials they are supplied with, offer some advice and hints about setting them up for the best possible performance and provide some suggestions in the unlikely event you experience any problems with the product. Please retain this document and all packaging for future use.

CONTENTS OF PACKAGING

The AE1 Active loudspeaker box contains the following items:

- 2 AE1 Active loudspeakers in transit bags
- 2 speaker grilles
- 2 IEC mains leads for mains connection
- 2 RCA interconnects (3 metre) for audio connection
- 8 isolating foam feet
- 1 pair of handling gloves
- 1 instruction manual
- 1 certificate of authenticity

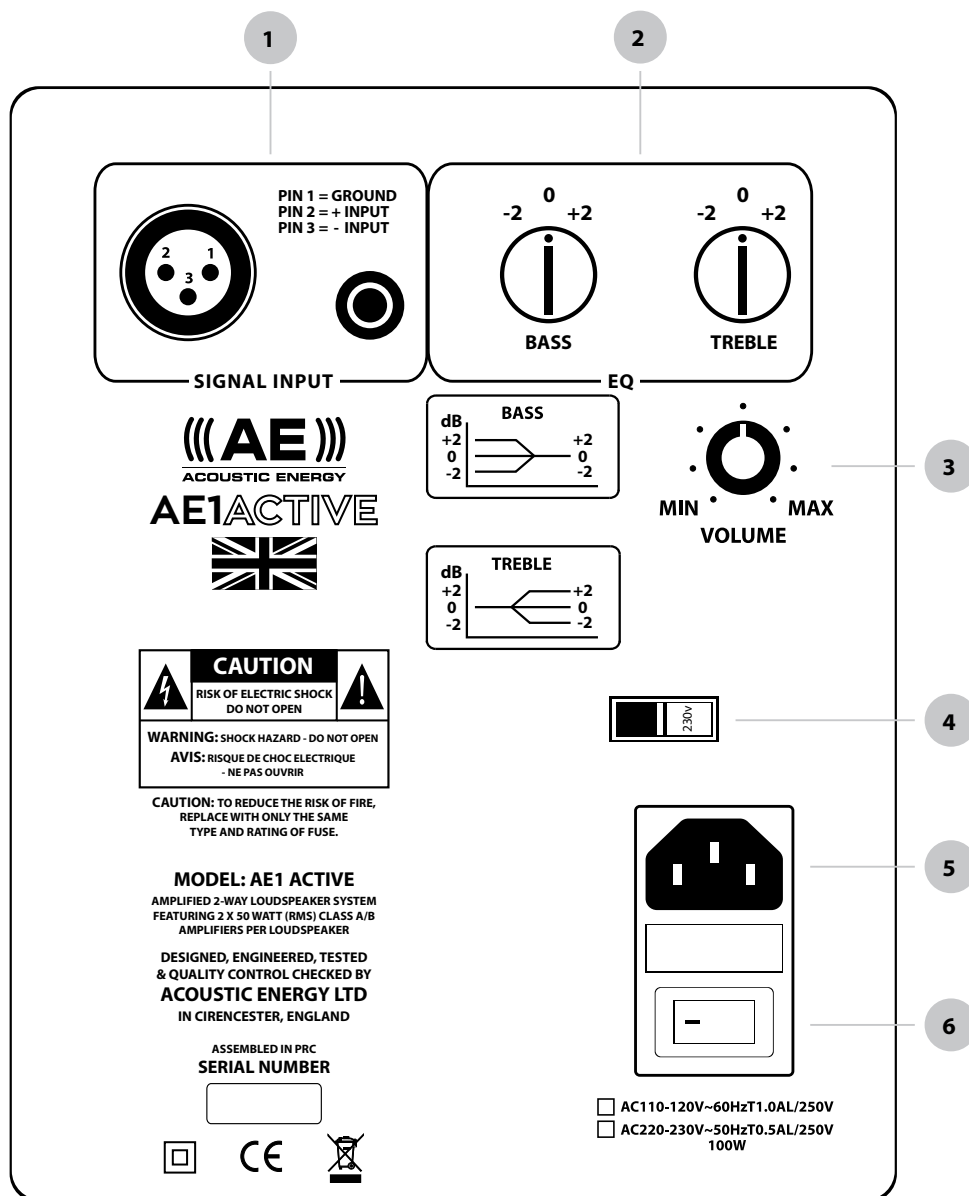
If any of these items are not present, it would be best to immediately contact your dealer.

WHAT IS AN ACTIVE SPEAKER

The AE1 Active differs from preceding Acoustic Energy speakers. What does this actually mean? An active speaker means that the power for the drivers is placed after the drivers. The signals are sent to what driver. By doing this, the drivers are amplified by an amplifier that has been designed specifically to solve that solves the balancing act of amplification. It is a trial and error on the part of the owner to get the best of the same basic size and design.

The AE1 Active combines the amplifier and the speaker in one unit. The benefits in terms of space efficiency and performance are obvious. The AE1 Active includes an all new Wideband Waveguide that takes a waveguide into the tweeter surround and radiates the sound with the room it is in. Higher frequency sound is directed through the waveguide while lower frequencies are radiated more directly. The result is that more of these frequencies are directed off other surfaces which increases efficiency.

The mid bass driver is no less sophisticated than the tweeter. Acoustic Energy has with metal drivers to create a more efficient driver at the expense of the transient speed and tonal quality. The AE1 Active loudspeaker. The bass response of the AE1 Active is enhanced by a slotted bass port used on a number of occasions. The port is an area that does not take up too much space and is designed to let air passing through it.



Rear connections and controls, refer to numbers and instructions opposite

REAR CONNECTIONS AND

1 INPUTS

The AE1 Active has the option of receiving an XLR input. The speakers are supplied with RCA inputs in most situations but some devices offer XLR connections. The AE1 Active has been equipped accordingly. For very long cable runs, an XLR connection if you have the means to do so, is recommended for longer transmission lengths.

Please note that any XLR cable used must be balanced. The AE1 Active, as marked on the rear panel.

Do not connect both inputs at the same time.

2 BASS AND TREBLE CONTROLS

The AE1 Active has a pair of adjustable controls to adjust the response of the speaker in your room.

The bass control adjusts between -2 and +2 dB. The +2 dB setting is effectively relative to rear walls. If the speaker is placed in a natural function of energy reflected off the rear wall, back in line with the treble output.

The treble control adjusts between -2 and +2 dB. The AE1 Active depending on the furnishing of the room, the way of furniture and bare walls, you may find a more even response in room. Conversely, in very small rooms the speakers benefit from a boost to the treble.

There are no right and wrong actions to take. Experiment and see what works best for you. The trim controls have no detrimental effect on the sound.

3 VOLUME CONTROL

The AE1 Active is fitted with a volume control that adjusts the level between zero (no output) and max (full output). This volume control serves two purposes. If you are using the AE1 Active with a device that has no volume control, you can use it to adjust the level. You can also use the volume to limit the output of the AE1 Active relative to the volume control of the connected device. This means you can either ensure that a given level cannot be exceeded either for preference or, in extreme cases, to avoid damage to the speaker.

4 MAINS VOLTAGE SWITCH

The AE1 Active is fitted with a power supply that is able to operate on both a 100-120v and 220-240v mains supply. This switch is used to alter the speakers between these two voltages. The switch is protected by a cover to avoid accidental adjustment.

Any adjustment of this switch **MUST** be undertaken with the speaker disconnected from the mains.

5 MAINS INPUT

This is the mains input to power the speaker. Always ensure you use a correctly certified IEC mains cable.

6 POWER SWITCH

The power switch is a two position unit that completely switches the AE1 Active off. If you are leaving the speakers inactive for a sustained period, they should always be switched off before doing so.

CONNECTION AND SETUP

The AE1 Active is designed to take an output from a piece of source equipment that is possible to use a piece of equipment that has speakers themselves but the most effective is a variable level output - commonly referred to as a preamplifier. There are many items of source equipment that have volume controls but they are not all adjustable considerably so there is a huge variety of options. You may prefer to use a dedicated preamplifier if you prefer which can be used.

Each AE1 active speaker will need mains connection. The connection can be made either using the mains cable or the power switch. We would try and use both connections at the same time. Connect the equipment or preamplifier to both AE1

There is no means of looping the signal. The speakers must not be connected together.

With power and signal connected, you should be able to connect the speaker to a preamplifier output to connect the speaker. The volume control of the source equipment, if you have one, set the volume control on the rear of the speaker. This results in levels that can become uncomfortable. Use the volume controls to reduce the output of the AE1 Active to a comfortable level. The volume.

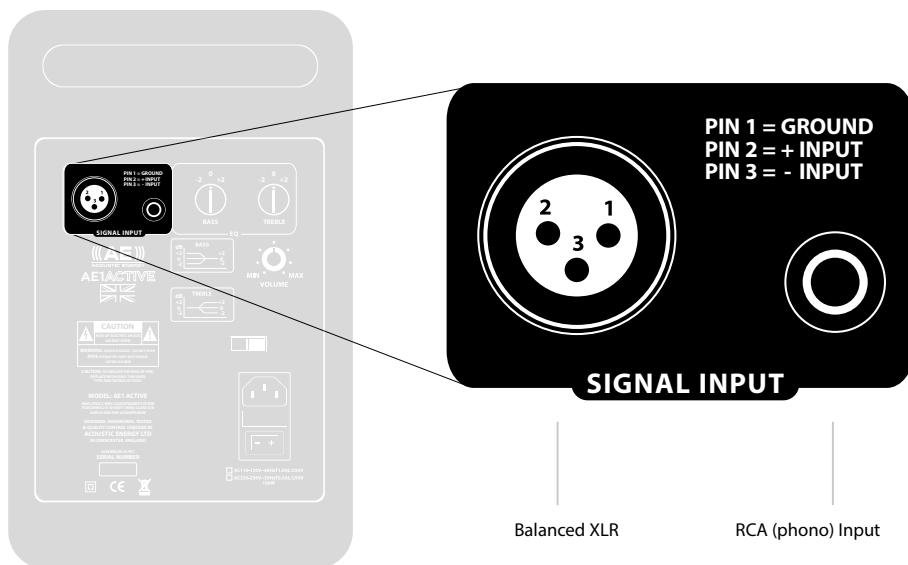
We have designed the AE1 Active to give a wide range of listening locations and it will work well when placed on a stand. We would always recommend using a dedicated stand for the speaker and elevate it to the right height for the different requirements but should leave it on the floor when seated.

Isolating foam feet are supplied to protect the speaker from damage and vibration. We would recommend placing the speakers on a dedicated stand.

Depending on how far apart the speakers are and your distance from them, it may also be worthwhile experimenting with pointing the speakers inwards so that you and the speakers form the points of a triangle and the sound is directed towards you.

We have fitted the AE1 Active with bass and treble controls that will alter the output of the speaker to reflect how close it is to walls and the size and furnishing of the room (their function is described in the 'Rear panel connections' section). It is worthwhile experimenting with these bass and treble settings to obtain the best results in your room.

The grille of the AE1 Active is acoustically transparent and designed to protect the drivers. In many domestic situations, we would strongly recommend that they are left in place.



Rear input connections using either RCA (phono) or Balanced XLR cables

TROUBLESHOOTING

The speaker will not power on

- Check there is power available to the speaker
- Check that the rear panel switch is on
- Check that the white power LED is lit

There is no sound

- Check there is power to the speaker
- Check there is power to the source
- Check that there is an audio connection between both of the AE1 Active speakers
- Check that the source equipment is working

The sound is intermittent or distorted

- Check your audio connections between the speaker and source
- Check that the levels from your source are not too high to cut out or distort. You can control the volume using the controls on the rear panel

Volume levels are too low

- Check that the volume controls on the speaker are turned up
- Check that the source equipment is working and its connections are still solidly in place

If only one speaker exhibits a problem - check the speaker - if the problem follows the speaker or stays on the same channel, let us know and we will let you seek assistance for the right component.

WARRANTY

Your Acoustic Energy AE1 Active speaker is guaranteed against defects in materials, manufacture and workmanship for three years from the date of purchase. Please retain all original packaging materials for possible future use.

If you register your Acoustic Energy loudspeakers online via our website (acoustic-energy.co.uk) we will extend your guarantee, free of charge, to five years.

Under this warranty Acoustic Energy agrees to repair any defect or, at the company's discretion, replace the faulty component(s) without charge for parts and labour. This warranty does not imply any acceptance by Acoustic Energy or its agents for consequential loss or damage and specifically excludes fair wear and tear, accident, misuse or unauthorised modification.

This warranty is applicable in the United Kingdom only and does not in any way limit the customer's legal rights. Claims and enquiries under the warranty for AE products purchased outside the UK should be addressed to the local importers or distributors.

If you have any reason to claim under the warranty please contact your dealer or point of purchase in the first instance.

AE1 ACTIVE SPECIFICATIONS

- Input Sensitivity¹
- Bandwidth²
- Horizontal coverage³
- Vertical Coverage
- Peak SPL⁴
- Maximum SPL⁵
- Amplifier
- Amplifier Power

- Crossover
- Woofer
- Tweeter
- Cabinet
- Inputs
- Controls

- Power connection
- Voltage selection

NOTES:

- ¹ Measured at 1m using pink-weighted
- ² Measured at 1m using pink-weighted
- ³ Measured at 1m using pink-weighted
- ⁴ Measured using a toneburst signal.
- ⁵ Measured using a band limited sine

All specifications and images are correct at the time of going to print. Acoustic Energy withhold the right to change specifications without notice.



Acoustic Energy
16 Bridge Road, Cirencester
Gloucestershire, England
GL7 1NJ

+44 (0) 1285 654432
info@acoustic-energy.co.uk

ACOUSTIC-ENERGY.CO.UK

https://acctech.ru/cat/nastennaya_akustika/